

Peter Latemore



- Building Designer
- 40+ years experience
- Member BDAQ
- Heritage specialist
- Runs Latemore Design
- I love what I do



Where to put your Kitchen & Bathroom - A Building Designer's perspective

Where to put your Kitchen + Bathroom

A Building Designer's Perspective



1st Bit
Listen



2nd Bit
Q + A

Kitchen History

**Eat-in
room
until
1985**

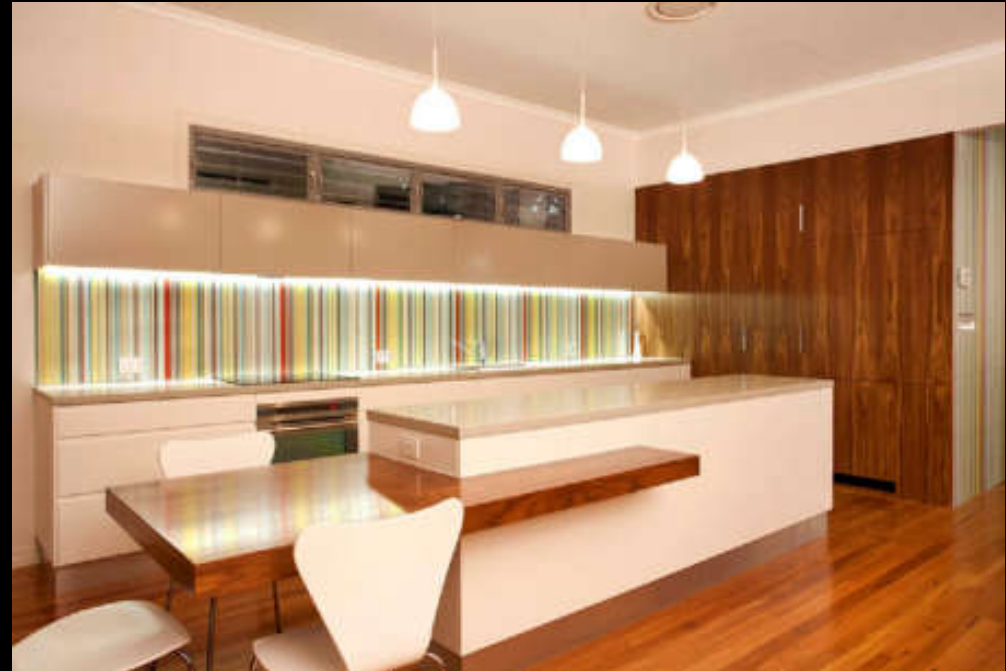


Bathroom History

Dunnies till 1960's



Kitchen Shapes



Galley / Island

Kitchen Shapes

U / Island



Kitchen Shapes



U / Peninsular

Kitchen Shapes



Parallel

Pantries



Butler's

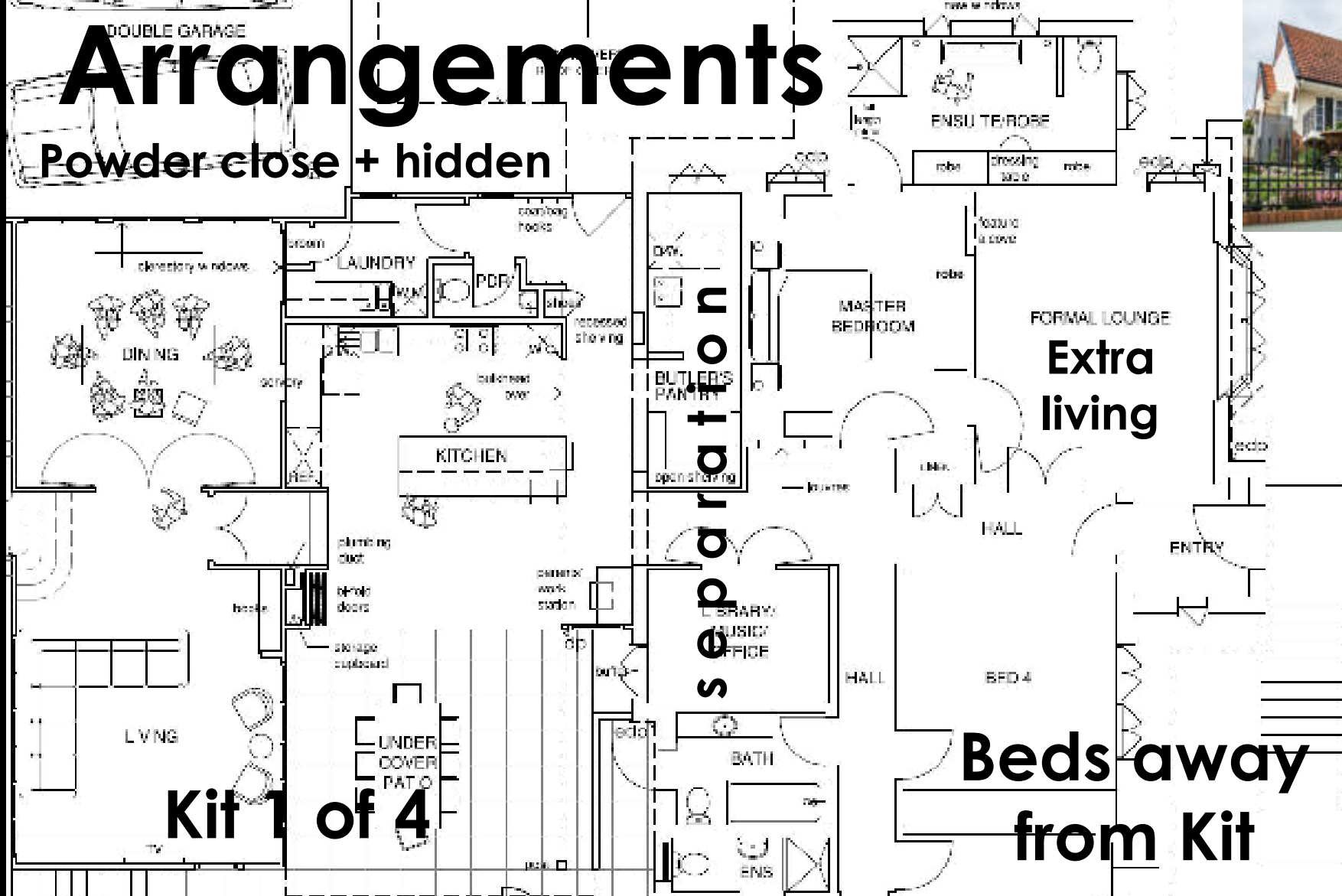
Arrangements

**Kitchen close to
Dining + Living**



Arrangements

Powder close + hidden



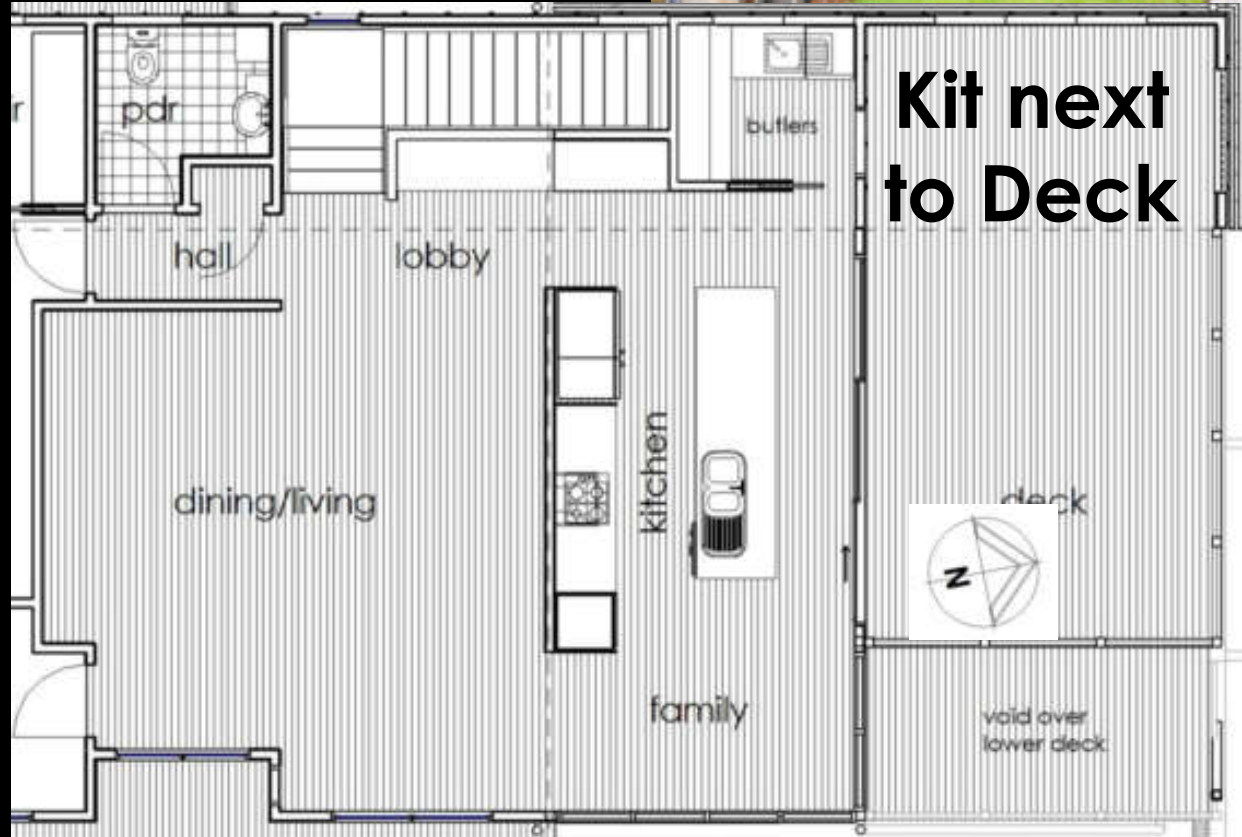
Arrangements



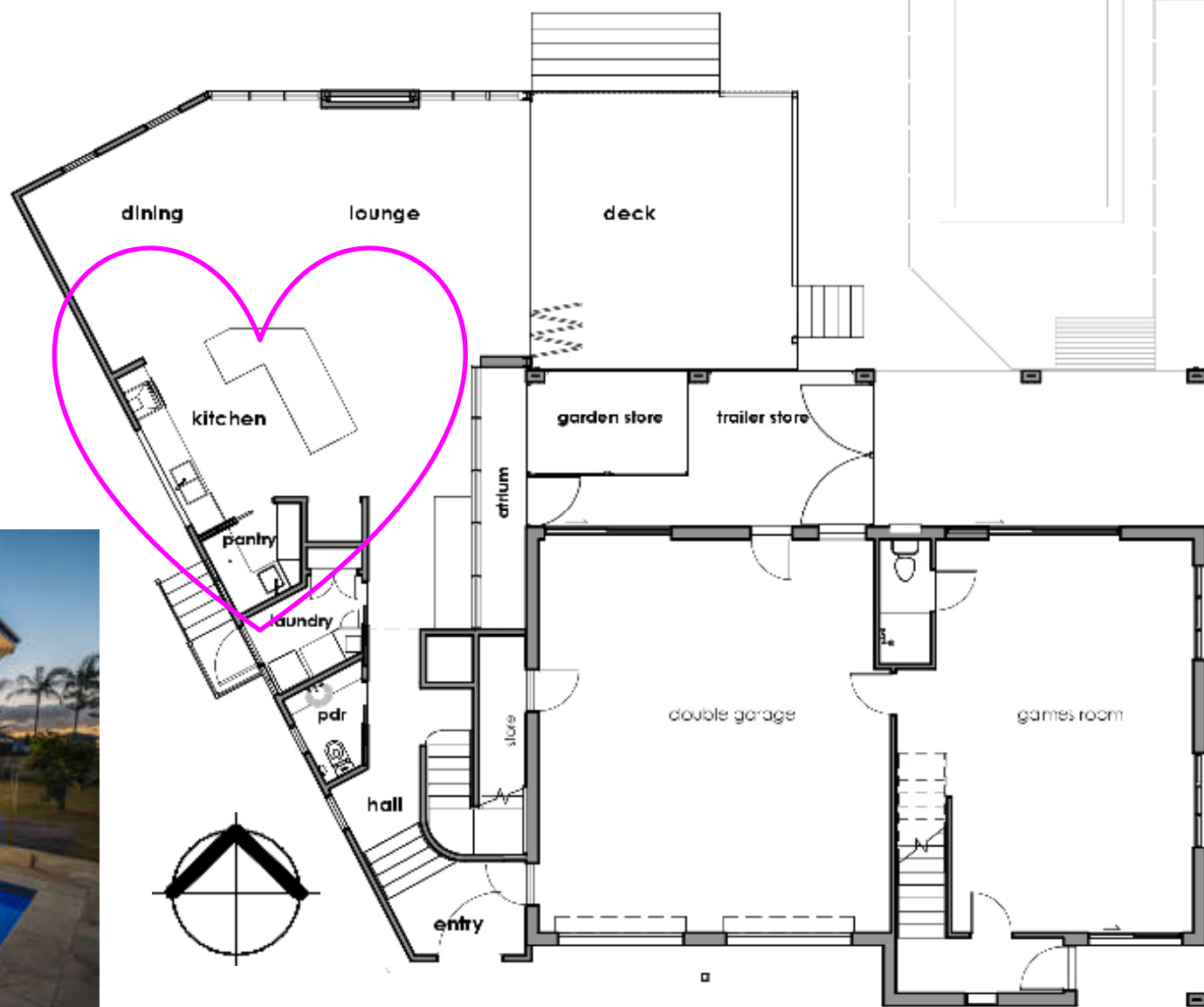
Linear
sort of

Arrangements

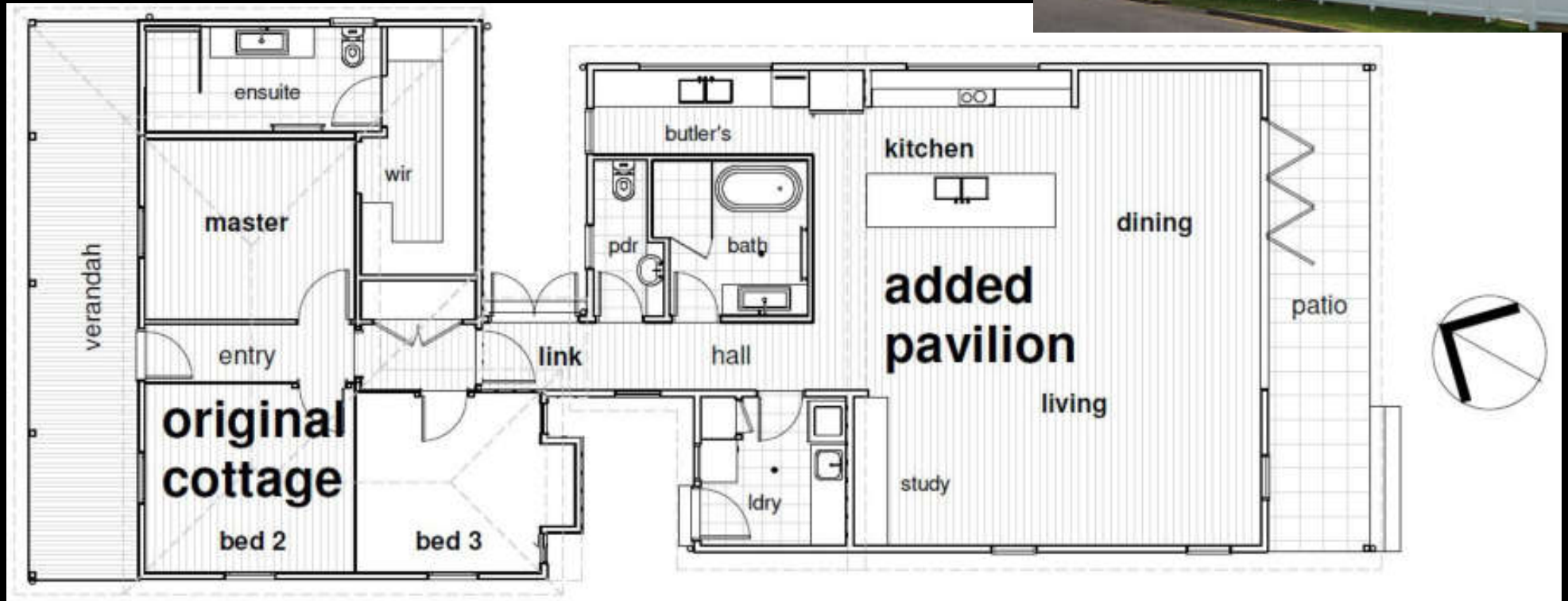
**Rumpus is
Downstairs**



Kitchen Heart of Home



Arrangements



Kitchen + Bath in Pavilion

Arrangements

Give Kitchen Light



Arrangements

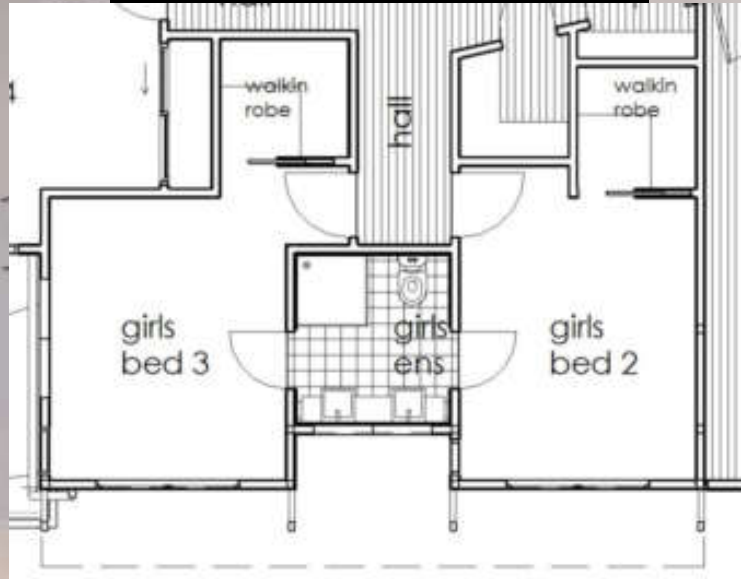
Everything onto Deck



Bathrooms



Efficient Bathrooms



Princess

Bathrooms

A modern bathroom interior featuring a white vanity with a vessel sink, a toilet, a glass-enclosed shower, and a bathtub. A large window with green shutters provides a view of the outdoors. Decorative elements include a patterned towel rack and a hanging plant.

Try the Wet Room

Toilets

Ensuite



Powder



Bathroom



Have More than One

Arrangements



Ok to move Kitchen or Bathroom

Money

New House

\$2,000/m²

to

\$4,000/m²

Kitchen

\$30,000

to

\$80,000

Bathroom

\$15,000

to

\$40,000

Kitchens + Bathrooms Cost \$



Scan
code to
give us
your
details



- Domestic Specialists
- Multi-award winners
- Design all buildings
- We love challenges
- Get us for a consult

latemoredesign.com.au

